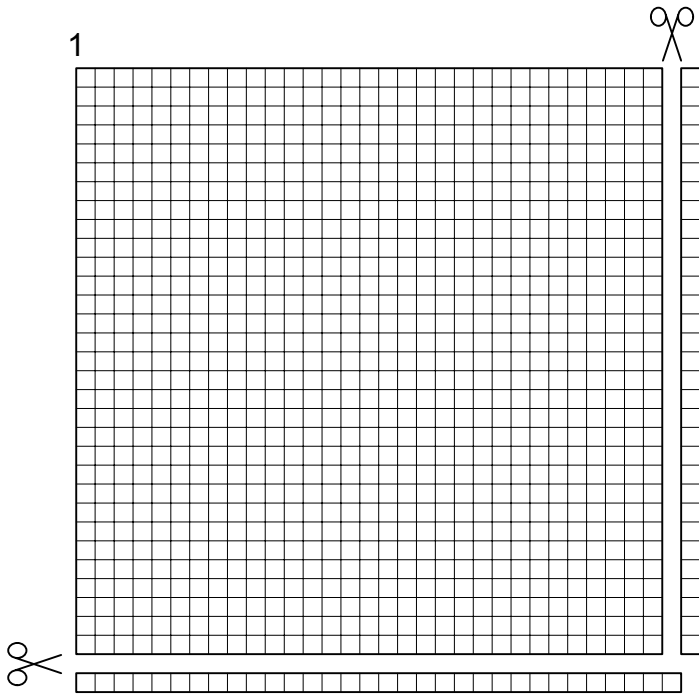
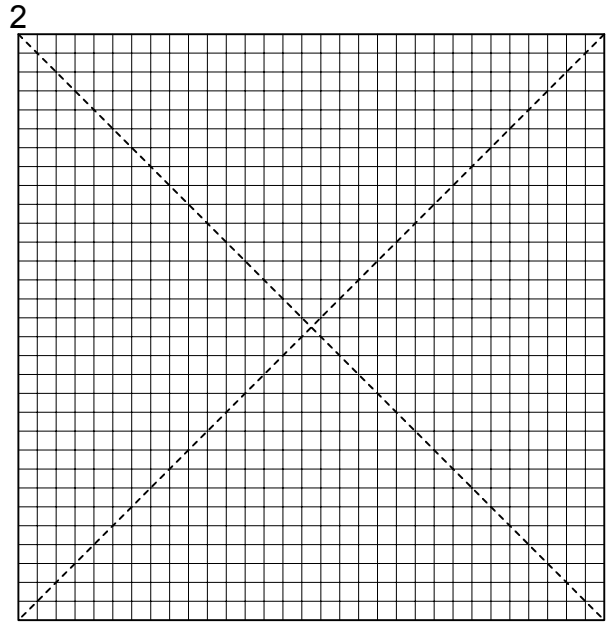


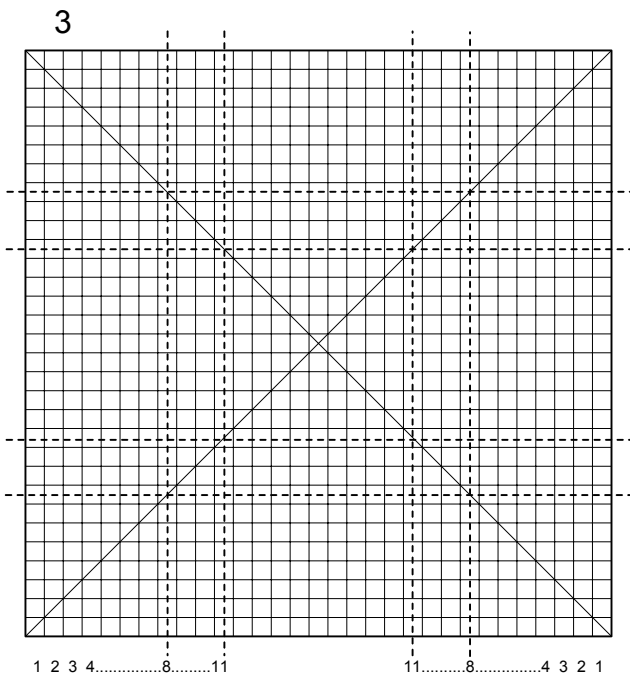
Eiffel Tower



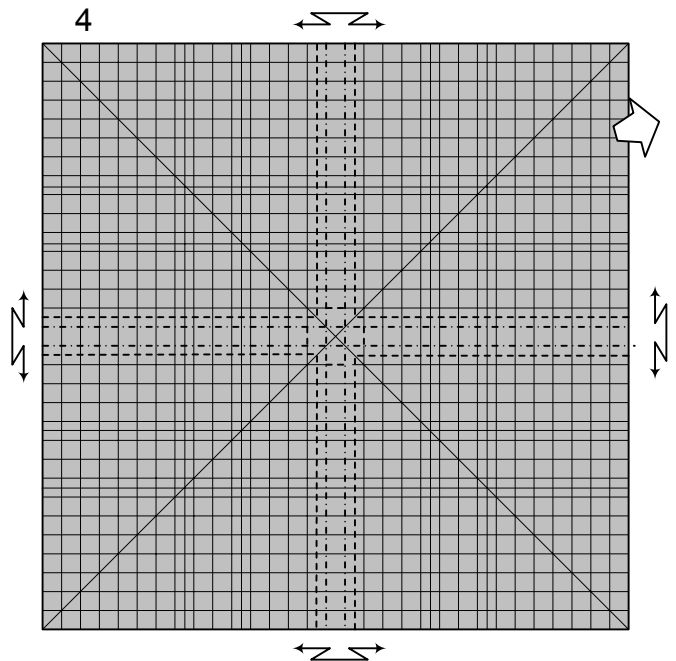
Begin with a square, white side up creased into a 32 by 32 grid of valley folds. Trim one square from the top and side to make a 31 by 31 grid.



Crease the diagonals, if you feel up to it, crease every diagonal to make the 'girders'. For clarity, the extra diagonals are not shown on the remaining diagrams.



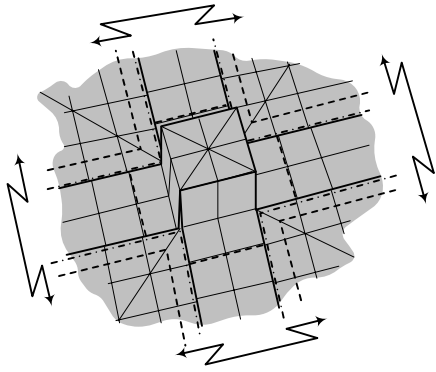
Bisect the 11th and 8th segments from the edge of each side.



Form a small box in the centre of the paper.

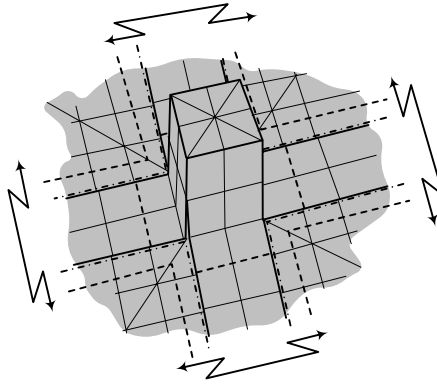
Eiffel Tower

5



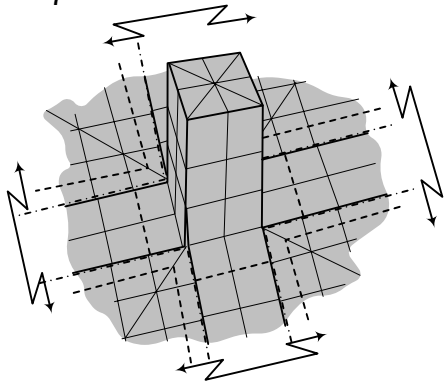
Repeat the procedure in step 4 to make the box taller.

6



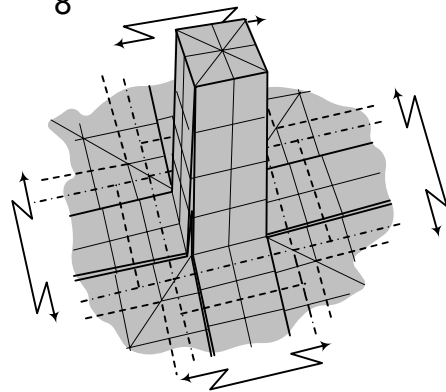
Repeat again to make the box 3 segments tall.

7



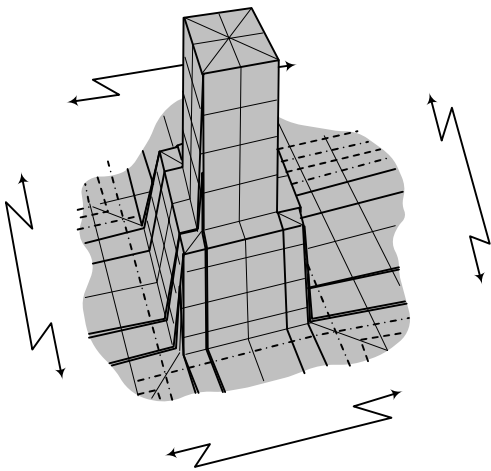
Repeat one more time to make the box 4 segments tall.

8



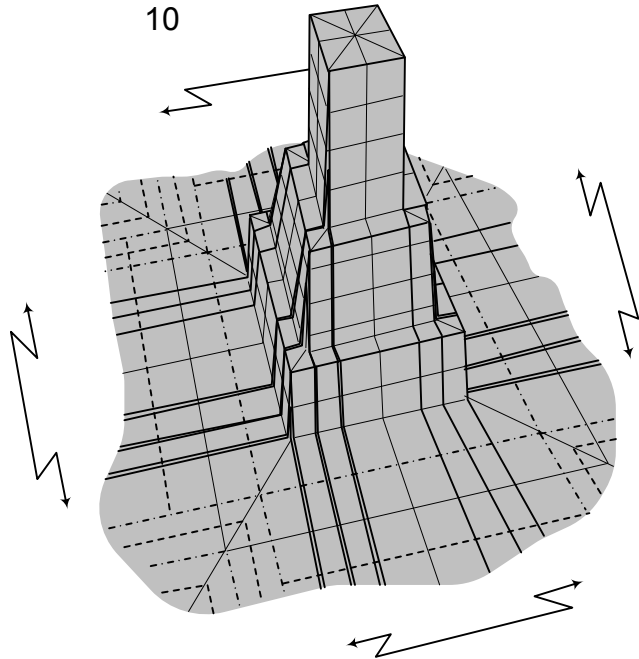
Starting on the half segment crease, make another stack 3 segments tall. I usually pre-crease all 3 segments and form the stack in one (slightly tricky) move!

9



Make the next stack 2 segments tall.

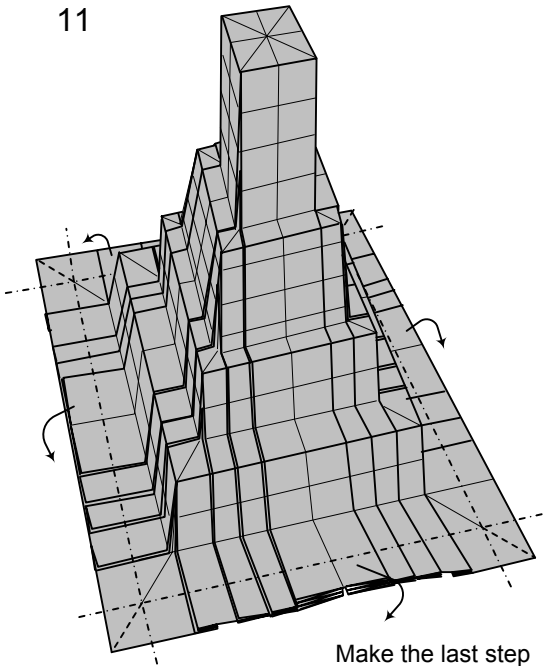
10



Make another 2 segment stack.

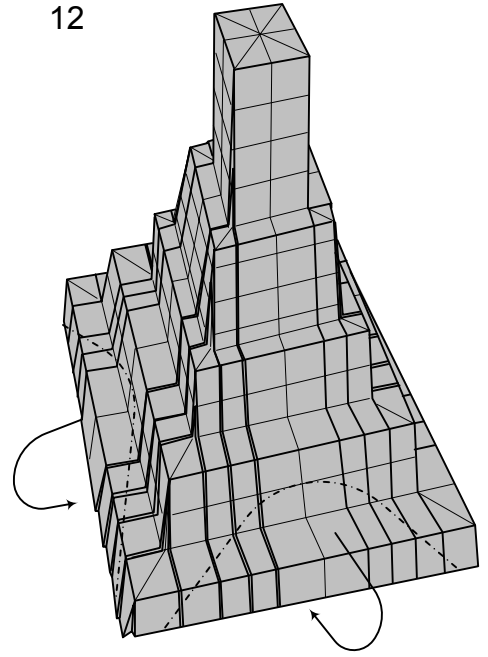
Eiffel Tower

11



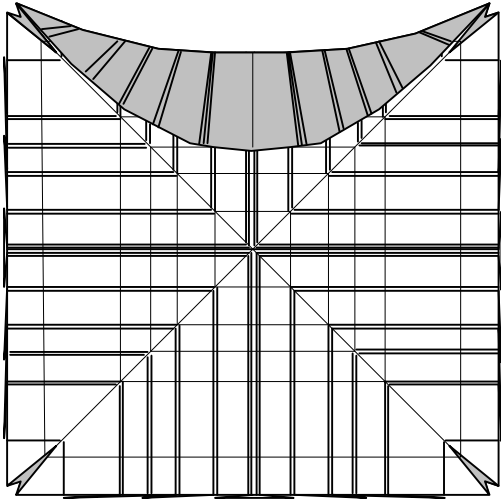
Make the last step

12



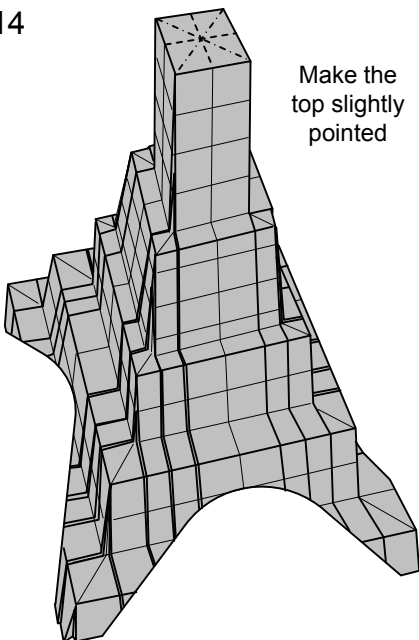
Mountain fold an arc shaped crease up inside the model, allowing the multiple thicknesses to fan out slightly.

13



View from underside showing 'fan'

14



Make the top slightly pointed

